

EST330S High Temperature Pressure Transmitter

- ✓ Accuracy: $\pm 0.5\%$ F.S
- ✓ OEM, Un-standard order available
- ✓ Narrow Range: 0-125mbar
- ✓ High Temperature: -40~125℃
- ✓ Kinds of pressure range and signal output
- ✓ Kinds of connection and pressure port



Applications

Fuel station | Gas dispenser | Refrigerator hydraulic lubricating | Pressure instrument | Energy and water treatment | Automatic detecting system

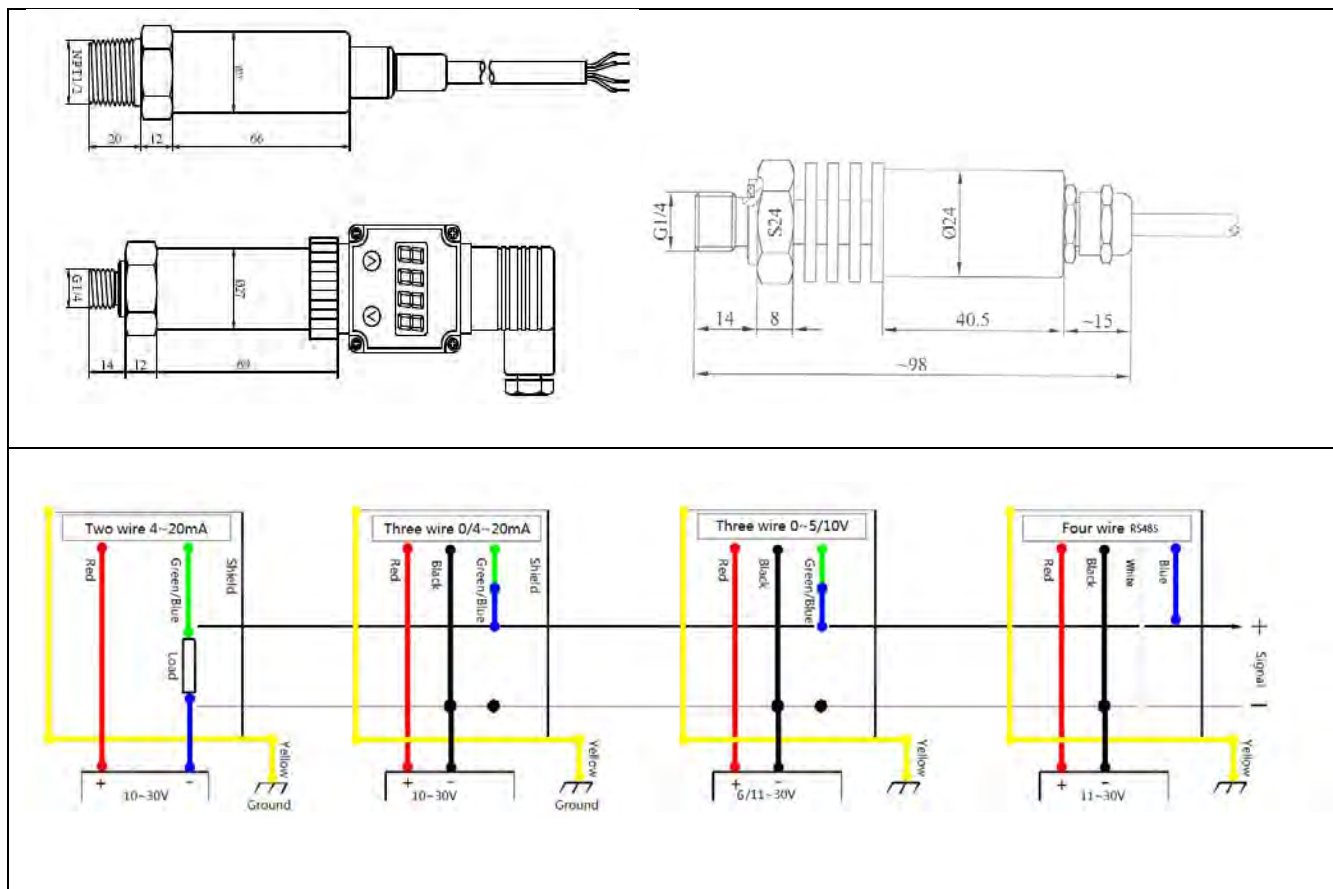
Product Introduction

EST330S High Temperature Pressure Transmitter adopt the German sensor which has very table and advanced performance even temperature reach to 130 ℃, the design of compact size is much rugged and light weight which can save installation space. Excellent sensor performance guarantees the range of EST330S can be 0-125mbar and 0-400mbar, and the accuracy is 0.5%/F.S.

Electrical Connections and Dimensional Drawings

| DIN 43650 HSM | | Cable outlet | |
|---|----------------------|--|---------------------------|
|  | U+ / I+ = 1 |  | U+ / I+ = Red |
| | U- / I- = 2 | | U- / I- = Black |
| | S+ = 3 | | S+ = Green / Blue |
| | Shield = 4 / Housing | | Shield = Housing / Yellow |





Specifications

| | | | | | |
|-----------------------|---|-----------------------------|---------|------------------------|---|
| Measuring Range | 0-125mbar; 0-400mbar | | | Medium compatibility | Corrosive medium compatible with 1Cr18Ni9Ti |
| Overload pressure | 1.5 times of rated pressure | | | Insulation | >100M Ω @100Vdc |
| Burst Pressure | 3 times of rated pressure | | | Electric Strength | 500V@60second |
| Accuracy | $\pm 0.5\%$ F.S (at 25 $^{\circ}$ C) | | | Electrical Connections | HSM. DIN43650, Protection IP65/ Cable outlet, Protection IP68 |
| Stability | 0.25%F.S/Y, 0.4%F.S/Ymax | | | Process connection | NPT $\frac{1}{2}$; NPT $\frac{1}{4}$; BSP $\frac{1}{2}$ "; BSP $\frac{1}{4}$ "; |
| Working temperature | -40 \sim 85 $^{\circ}$ C, (-40 \sim 125 $^{\circ}$ C with radiator) | | | Response Time | 10ms |
| Seal material | NBR O-Ring default; EPDM | | | EMC | EMI: EN50081-1/-2; EMS: EN50082-2 |
| Electrical parameters | Two wire | Three wire | | | |
| Output Signal | 4~20mA | 0~10Vdc | 0~5V | | |
| Power supply | 8~28Vdc | 13~28Vdc | 1~5V/6V | | |
| Load resistance | (U-8)/0.023(Ω) | Voltage type: >10K Ω | | | |

1MPa=10bar; 1bar \approx 14.5PSI; 1PSI=6.8965kPa; 1kgf/cm 2 =1atm; 1atm \approx 98kPa

Ordering Procedure

| | | | | | | | | | | |
|------|-------------------------------------|-----------------------------|-----------------------------|------|-----|-----|---|-----|----|--|
| EST | Piezoresistive Pressure Transmitter | | | | | | | | | |
| | Code | | Model | | | | | | | |
| | 330S | | Universal (without display) | | | | | | | |
| | 330SD | | Display (4LCD) | | | | | | | |
| | Cod | | Span | | | | | | | |
| | 1 | | 0-125mbar | | | | | | | |
| | 2 | | 0-400mbar | | | | | | | |
| | Code | | Output Type | | | | | | | |
| | A | | 4~20mA | | | | | | | |
| | V | | 0~5V | | | | | | | |
| | V1 | | 0~10V | | | | | | | |
| | V05 | | 1~5V | | | | | | | |
| | V2 | | 1~6V | | | | | | | |
| | Code | | Precision | | | | | | | |
| | 0.25 | | ±0.25%F.S | | | | | | | |
| | 0.5 | | ±0.5%F.S | | | | | | | |
| | Code | | Power Supply | | | | | | | |
| | DC8 | | 8~28Vdc | | | | | | | |
| | DC13 | | 13~28Vdc | | | | | | | |
| | Code | | Process connection | | | | | | | |
| | M | | M20 x 1.5 | | | | | | | |
| | G2 | | G1/2 | | | | | | | |
| | R2 | | R1/2 | | | | | | | |
| N2 | | NPT1/2 | | | | | | | | |
| B12 | | BSP ½" | | | | | | | | |
| Code | | Electrical Connections | | | | | | | | |
| D | | DIN43650-A | | | | | | | | |
| C | | Cable Electrical Connection | | | | | | | | |
| H | | HSM | | | | | | | | |
| Code | | Cable length XXm=... m | | | | | | | | |
| Code | | Packing | | | | | | | | |
| Bb | | Bubble bag | | | | | | | | |
| Foa | | Plastics foam | | | | | | | | |
| EST | 330S | 1 | A | 0.25 | DC8 | B12 | C | 1.5 | Bb | |